

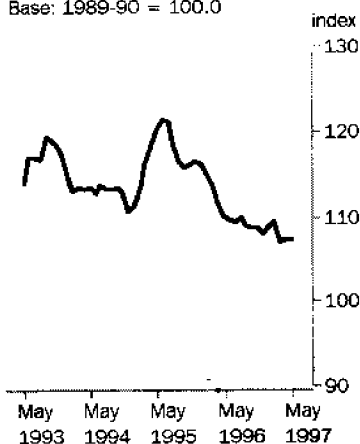
IMPORT PRICE INDEX

AUSTRALIA

EMBARGO: 11:30AM (CANBERRA TIME) TUES 15 JUL 1997

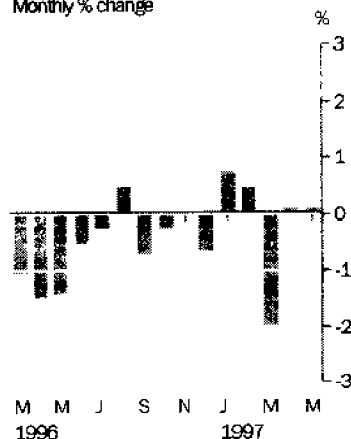
Index numbers

Base: 1989-90 = 100.0



All groups

Monthly % change



MAY KEY FIGURES

| | % change Apr 97 to May 97 | % change May 96 to May 97 |
|-------------------------------------|---------------------------------|---------------------------------|
| All groups | 0.1 | -2.6 |
| Food and live animals | 0.7 | 3.8 |
| Beverages and tobacco | 1.1 | 9.2 |
| Crude materials | -0.4 | -5.3 |
| Mineral fuels, etc. | -2.4 | 1.1 |
| Animal and vegetable oils, etc. | 1.1 | -15.1 |
| Chemical products | -0.9 | -4.8 |
| Manufactured goods, by material | -0.1 | -3.0 |
| Machinery and transport equipment | 0.5 | -3.6 |
| Miscellaneous manufactured articles | 0.4 | 0.3 |
| Commodities and transactions n.e.s. | -0.2 | -10.3 |

MAY KEY POINTS

ALL GROUPS INDEX

- The value of the Australian dollar fell against the major trading currencies, leading to a small rise in the index in May 1997.

MAJOR MOVEMENTS

- The major contributors to the increase were price rises for machinery and transport equipment and coffee.
- Partly offsetting the price rises were decreases in prices for petroleum and related products and fertilizers.

INQUIRIES

- For further information about these and related statistics, contact Peter Sturgeon on 06 252 5348, or any ABS Office.

NOTE:
See 'Planned changes
to this publication'
on Page 2.

NOTES

FORTHCOMING ISSUES

ISSUE(Month)

RELEASE DATE

June 1997

15 August 1997

ISSUE(Quarter)

RELEASE DATE

September 1997

21 October 1997

.....

CHANGES IN THIS ISSUE

There are no changes in this issue.

.....

PLANNED CHANGES TO THIS PUBLICATION

As a result of measures in the 1997/98 Federal Budget to reduce ABS running costs, the frequency of compilation and publication of the producer and international trade price indexes will be reduced from monthly to quarterly, thereby putting the statistics on the same frequency as the Consumer Price Index. The June 1997 issue of this publication will be the last monthly release. Commencing with the September quarter 1997, the publication will be released on a quarterly basis.

Subscriptions to this publication will be automatically extended to compensate for the reduced frequency of publication. This will be reflected on 1998 renewal notices. If you wish to make other arrangements please call our toll free number, 1800 020 608.

.....

W. McLennan
Australian Statistician

IMPORT PRICE INDEX, All Groups

| <i>Period</i> | <i>Index numbers(a)</i> | <i>% change from corresponding month of previous year</i> | <i>% change from previous period</i> |
|----------------|-------------------------|---|--|
| 1993-94 | 115.6 | | 3.1 |
| 1994-95 | 114.8 | | -0.7 |
| 1995-96 | 115.0 | | 0.2 |
| 1996 | | | |
| March | 113.5 | -2.3 | -1.0 |
| April | 111.8 | -5.3 | -1.5 |
| May | 110.2 | -8.2 | -1.4 |
| June | 109.6 | -9.7 | -0.5 |
| July | 109.3 | -9.7 | -0.3 |
| August | 109.8 | -7.1 | 0.5 |
| September | 109.0 | -6.4 | -0.7 |
| October | 108.7 | -6.1 | -0.3 |
| November | 108.7 | -6.5 | 0.0 |
| December | 108.0 | -7.3 | -0.6 |
| 1997 | | | |
| January | 108.8 | -6.3 | 0.7 |
| February | 109.3 | -4.7 | 0.5 |
| March | 107.1 | -5.6 | -2.0 |
| April | 107.2 | -4.1 | 0.1 |
| May | 107.3 | -2.6 | 0.1 |

(a) Base of each index: 1989-90 = 100.0

IMPORT PRICE INDEX, Contribution to All Groups Index(a)

| Category | April 1997 | May 1997 | Change |
|--|---------------|-------------|--------|
| All groups | 107.2 | 107.3 | 0.1 |
| SITC SECTIONS: Contribution to All Groups Index (index points) | | | |
| 0 Food and live animals chiefly for food | 4.14 | 4.17 | 0.03 |
| 1 Beverages and tobacco | 0.95 | 0.96 | 0.01 |
| 2 Crude materials, inedible, except fuels | 3.64 | 3.63 | -0.01 |
| 3 Mineral fuels, lubricants and other related materials | 5.08 | 4.96 | -0.12 |
| 4 Animal and vegetable oils, fats and waxes | 0.37 | 0.38 | 0.01 |
| 5 Chemicals and related products n.e.s. | 11.35 | 11.25 | -0.10 |
| 6 Manufactured goods classified by material | 18.44 | 18.42 | -0.02 |
| 7 Machinery and transport equipment | 48.41 | 48.63 | 0.22 |
| 8 Miscellaneous manufactured articles | 14.39 | 14.45 | 0.06 |
| 9 Commodities and transactions not classified elsewhere | 0.41 | 0.41 | 0.00 |
| SITC DIVISIONS: Contribution to All Groups Index (index points) | | | |
| 03 Fish, crustaceans and molluscs and preparations thereof | 1.08 | 1.08 | 0.00 |
| 24 Cork and wood | 1.87 | 1.86 | -0.01 |
| 33 Petroleum, petroleum products and related materials | 5.08 | 4.96 | -0.12 |
| 51 Organic chemicals | 2.34 | 2.36 | 0.02 |
| 52 Inorganic chemicals | 1.05 | 1.06 | 0.01 |
| 59 Chemical materials and products n.e.s. | 1.84 | 1.83 | -0.01 |
| 64 Paper, paperboard and articles of paper pulp, paper and paperboard | 2.67 | 2.66 | -0.01 |
| 65 Textile yarn, fabrics, made-up articles n.e.s. and related products | 4.51 | 4.53 | 0.02 |
| 69 Manufactures of metals n.e.s. | 3.10 | 3.08 | -0.02 |
| 71 Power generating machinery and equipment | 3.22 | 3.24 | 0.02 |
| 72 Machinery specialised for particular industries | 6.32 | 6.41 | 0.09 |
| 74 General industrial machinery and equipment n.e.s. | 6.97 | 7.05 | 0.08 |
| 75 Office machines and automatic data processing machines | 4.26 | 4.29 | 0.03 |
| 76 Telecommunications and sound recording equipment | 3.15 | 3.10 | -0.05 |
| 77 Electrical machinery, apparatus, appliances n.e.s. | 5.37 | 5.41 | 0.04 |
| 78 Road vehicles | 14.13 | 14.15 | 0.02 |
| 79 Other transport equipment | 4.98 | 5.01 | 0.03 |
| 87 Professional, scientific and controlling instruments and apparatus n.e.s. | 2.90 | 2.91 | 0.01 |
| 89 Miscellaneous manufactured articles n.e.s. | 5.82 | 5.84 | 0.02 |
| Other | 26.54 | 26.47 | -0.07 |

(a) For an explanation of this table see paragraph 17 of the Explanatory Notes

IMPORT PRICE INDEX(a), By SITC Section

| Period | Food and live animals chiefly for food (0) | Beverages and tobacco (1) | Crude materials, inedible, except fuels (2) | Mineral fuels, lubricants and other related materials (3) | Animal and vegetable oils, fats and waxes (4) | Chemicals and related products n.e.s. (5) | Manufactured goods classified chiefly by material (6) | Machinery and transport equipment (7) | Miscellaneous manufactured articles (8) | Commodities and transactions not classified elsewhere (9) |
|----------------|--|---------------------------|---|---|---|---|---|---------------------------------------|---|---|
| 1993-94 | 106.8 | 111.5 | 116.3 | 93.5 | 120.9 | 103.3 | 112.1 | 123.1 | 117.0 | 110.4 |
| 1994-95 | 116.6 | 106.6 | 121.9 | 90.1 | 140.4 | 108.8 | 110.4 | 121.1 | 113.4 | 104.4 |
| 1995-96 | 115.9 | 109.8 | 125.8 | 89.8 | 170.1 | 115.1 | 115.7 | 117.4 | 114.2 | 103.7 |
| 1996 | | | | | | | | | | |
| March | 112.4 | 110.7 | 123.7 | 94.2 | 178.4 | 112.3 | 115.4 | 114.8 | 113.8 | 103.5 |
| April | 111.2 | 109.6 | 122.3 | 94.4 | 179.4 | 111.6 | 113.7 | 112.6 | 111.6 | 100.7 |
| May | 110.8 | 109.0 | 115.6 | 92.5 | 171.4 | 110.7 | 112.1 | 111.1 | 110.7 | 99.1 |
| June | 110.9 | 109.3 | 113.8 | 90.9 | 172.0 | 109.5 | 111.7 | 110.5 | 111.0 | 98.0 |
| July | 111.4 | 109.7 | 112.3 | 90.3 | 172.5 | 109.4 | 110.6 | 110.0 | 111.8 | 97.8 |
| August | 112.8 | 110.0 | 112.5 | 91.8 | 165.5 | 109.7 | 110.5 | 110.6 | 112.4 | 99.3 |
| September | 112.4 | 109.7 | 111.8 | 94.6 | 163.6 | 108.6 | 109.6 | 109.6 | 111.4 | 97.0 |
| October | 111.0 | 110.0 | 109.2 | 99.3 | 165.5 | 107.7 | 109.2 | 109.1 | 111.0 | 96.9 |
| November | 110.6 | 113.4 | 108.0 | 102.3 | 168.1 | 107.6 | 109.8 | 108.7 | 110.7 | 95.1 |
| December | 111.2 | 114.1 | 107.3 | 101.4 | 166.7 | 107.1 | 109.5 | 107.7 | 110.3 | 95.2 |
| 1997 | | | | | | | | | | |
| January | 111.0 | 115.0 | 109.2 | 106.4 | 164.0 | 107.6 | 109.8 | 108.3 | 111.2 | 91.9 |
| February | 112.7 | 116.1 | 111.6 | 107.8 | 151.1 | 107.3 | 110.0 | 108.8 | 111.5 | 91.2 |
| March | 113.3 | 115.9 | 109.2 | 97.6 | 151.7 | 106.5 | 108.6 | 106.5 | 110.0 | 89.6 |
| April | 114.2 | 117.7 | 109.9 | 95.8 | 144.0 | 106.4 | 108.8 | 106.6 | 110.6 | 89.1 |
| May | 115.0 | 119.0 | 109.5 | 93.5 | 145.6 | 105.4 | 108.7 | 107.1 | 111.0 | 88.9 |

(a) Base of each index: 1989-90 = 100.0

IMPORT PRICE INDEX(a), By Selected SITC Division

| Period | Petroleum, petroleum products and related materials (33) | Organic chemicals (51) | Paper, paperboard and articles made of paper (64) | Textile yarn, fabrics, and related products (65) | Power generating machinery and equipment (71) | Machinery specialised for particular industries (72) |
|----------------|--|------------------------|---|--|---|--|
| 1993-94 | 93.5 | 98.1 | 99.6 | 110.7 | 132.8 | 122.2 |
| 1994-95 | 90.1 | 111.6 | 97.6 | 110.2 | 131.5 | 120.0 |
| 1995-96 | 89.8 | 105.1 | 116.8 | 113.2 | 131.1 | 120.2 |
| 1996 | | | | | | |
| March | 94.2 | 99.2 | 117.9 | 111.1 | 128.5 | 118.6 |
| April | 94.4 | 99.9 | 116.4 | 109.8 | 126.0 | 116.8 |
| May | 92.5 | 100.1 | 113.3 | 108.6 | 125.0 | 115.1 |
| June | 90.9 | 100.9 | 111.7 | 108.4 | 123.7 | 115.2 |
| July | 90.3 | 99.2 | 106.7 | 108.9 | 123.2 | 115.7 |
| August | 91.8 | 98.6 | 104.6 | 108.4 | 122.4 | 117.3 |
| September | 94.6 | 100.2 | 103.0 | 107.3 | 120.7 | 115.6 |
| October | 99.3 | 99.8 | 100.8 | 107.0 | 120.7 | 116.0 |
| November | 102.3 | 98.8 | 100.8 | 108.2 | 120.4 | 115.8 |
| December | 101.4 | 98.4 | 100.0 | 107.9 | 119.9 | 114.3 |
| 1997 | | | | | | |
| January | 106.4 | 98.7 | 98.4 | 109.0 | 119.1 | 114.6 |
| February | 107.8 | 101.0 | 98.4 | 110.1 | 122.1 | 114.5 |
| March | 97.6 | 101.0 | 98.3 | 108.5 | 118.8 | 113.0 |
| April | 95.8 | 102.3 | 97.5 | 108.9 | 118.9 | 114.7 |
| May | 93.5 | 103.3 | 97.1 | 109.3 | 119.6 | 116.2 |

(a) Base of each index: 1989-90 = 100.0

IMPORT PRICE INDEX(a), By Selected SITC Division *continued*

| <i>Period</i> | <i>General industrial machinery, equipment and parts (74)</i> | <i>Office machines and ADP machines (75)</i> | <i>Telecommunications and sound recording equipment (76)</i> | <i>Electrical machinery, etc. and parts thereof (77)</i> | <i>Road vehicles (78)</i> | <i>Other transport equipment (79)</i> |
|----------------|---|--|--|--|---------------------------|---------------------------------------|
| 1993-94 | 130.0 | 88.7 | 110.4 | 112.3 | 145.4 | 124.9 |
| 1994-95 | 127.4 | 82.9 | 104.7 | 109.5 | 149.8 | 118.5 |
| 1995-96 | 126.8 | 70.1 | 99.1 | 107.3 | 147.3 | 116.8 |
| 1996 | | | | | | |
| March | 125.0 | 66.1 | 95.8 | 105.3 | 144.2 | 115.5 |
| April | 122.8 | 64.2 | 94.5 | 103.2 | 141.7 | 113.1 |
| May | 122.0 | 63.3 | 92.3 | 101.7 | 140.3 | 109.6 |
| June | 121.6 | 62.8 | 89.9 | 101.2 | 139.3 | 110.3 |
| July | 121.1 | 62.8 | 89.1 | 100.5 | 137.8 | 110.9 |
| August | 121.6 | 62.5 | 88.2 | 101.2 | 139.1 | 112.8 |
| September | 119.6 | 62.0 | 86.4 | 101.2 | 138.5 | 111.4 |
| October | 119.5 | 61.4 | 86.2 | 100.5 | 137.2 | 111.8 |
| November | 119.7 | 60.5 | 85.1 | 99.6 | 136.7 | 111.8 |
| December | 117.8 | 59.3 | 84.7 | 98.8 | 136.1 | 111.5 |
| 1997 | | | | | | |
| January | 118.9 | 59.3 | 84.5 | 99.6 | 136.6 | 114.2 |
| February | 119.4 | 59.9 | 84.9 | 99.8 | 136.6 | 116.1 |
| March | 117.2 | 57.7 | 83.1 | 97.7 | 133.9 | 112.9 |
| April | 117.6 | 57.4 | 83.0 | 98.1 | 132.8 | 114.2 |
| May | 118.9 | 57.7 | 81.5 | 98.9 | 133.0 | 114.7 |

(a) Base of each index: 1989-90 = 100.0

IMPORT PRICE INDEX(a), By Selected ATSN Section

| Period | Prepared foodstuffs, beverages and tobacco (4) | Mineral products (5) | Chemical industry products (6) | Plastics and rubber, and articles thereof (7) | Wood pulp, paper and paper products (10) | Textiles and textile articles (11) | Base metals and articles thereof (15) | Machinery and electrical equipment (16) | Transport equipment (17) | Instruments, clocks and watches, optical and photographic apparatus (18) |
|----------------|--|----------------------|--------------------------------|---|--|------------------------------------|---------------------------------------|---|--------------------------|--|
| 1993-94 | 108.7 | 101.2 | 99.2 | 111.4 | 98.0 | 109.5 | 110.5 | 110.5 | 140.2 | 125.9 |
| 1994-95 | 110.9 | 98.9 | 103.9 | 114.1 | 98.0 | 108.4 | 108.2 | 106.3 | 141.9 | 124.9 |
| 1995-96 | 114.6 | 98.9 | 109.9 | 120.5 | 113.8 | 109.4 | 113.5 | 101.5 | 139.3 | 125.4 |
| 1996 | | | | | | | | | | |
| March | 113.2 | 102.7 | 108.7 | 118.1 | 115.2 | 107.7 | 113.6 | 99.0 | 136.7 | 123.5 |
| April | 110.9 | 103.5 | 107.7 | 116.9 | 113.1 | 106.2 | 110.9 | 97.1 | 134.2 | 121.0 |
| May | 111.0 | 101.3 | 106.6 | 115.9 | 107.9 | 105.0 | 110.2 | 95.8 | 132.3 | 119.9 |
| June | 111.0 | 99.8 | 106.5 | 113.8 | 105.7 | 104.7 | 109.5 | 95.1 | 131.7 | 120.9 |
| July | 111.1 | 99.3 | 106.2 | 114.0 | 103.4 | 104.6 | 108.9 | 94.9 | 130.8 | 121.2 |
| August | 111.4 | 101.0 | 106.4 | 114.1 | 102.5 | 104.2 | 108.9 | 95.1 | 132.2 | 122.2 |
| September | 111.5 | 103.8 | 104.7 | 113.4 | 100.9 | 103.1 | 108.1 | 94.0 | 131.4 | 121.3 |
| October | 110.9 | 106.9 | 103.5 | 113.3 | 100.7 | 102.9 | 108.3 | 93.8 | 130.6 | 120.1 |
| November | 112.3 | 109.8 | 103.4 | 114.1 | 100.8 | 103.4 | 108.5 | 93.3 | 130.2 | 119.3 |
| December | 112.4 | 108.9 | 103.3 | 113.1 | 100.1 | 103.0 | 108.4 | 92.3 | 129.7 | 118.6 |
| 1997 | | | | | | | | | | |
| January | 112.4 | 114.1 | 103.2 | 113.9 | 99.8 | 104.2 | 108.1 | 92.6 | 130.8 | 119.1 |
| February | 112.6 | 115.9 | 102.3 | 114.3 | 100.0 | 105.3 | 108.6 | 93.2 | 131.2 | 118.8 |
| March | 113.0 | 105.4 | 101.1 | 114.2 | 99.1 | 103.5 | 106.0 | 91.1 | 128.4 | 117.0 |
| April | 112.7 | 103.8 | 100.8 | 114.7 | 98.6 | 104.1 | 106.2 | 91.5 | 128.0 | 117.1 |
| May | 115.1 | 101.6 | 99.7 | 114.4 | 98.4 | 104.5 | 106.1 | 91.9 | 128.4 | 118.0 |

(a) Base of each index: 1989-90 = 100.0

IMPORT PRICE INDEX(a), By Selected ANZSIC Industry of Origin Division

| Period | Agriculture, forestry and fishing (A) | Mining (B) | Manufacturing (C) |
|----------------|---|---------------|----------------------|
| 1993-94 | 107.3 | 97.8 | 115.5 |
| 1994-95 | 141.7 | 102.5 | 113.8 |
| 1995-96 | 136.3 | 104.5 | 113.5 |
| 1996 | | | |
| March | 131.3 | 106.0 | 112.0 |
| April | 129.5 | 109.0 | 110.2 |
| May | 127.6 | 106.5 | 108.7 |
| June | 125.2 | 103.7 | 108.2 |
| July | 124.6 | 106.9 | 107.8 |
| August | 125.1 | 109.5 | 108.2 |
| September | 124.6 | 113.7 | 107.3 |
| October | 122.2 | 117.2 | 107.0 |
| November | 121.8 | 121.4 | 106.9 |
| December | 124.3 | 119.5 | 106.2 |
| 1997 | | | |
| January | 123.7 | 124.5 | 106.9 |
| February | 130.2 | 126.5 | 107.2 |
| March | 129.9 | 114.3 | 105.3 |
| April | 135.1 | 111.4 | 105.4 |
| May | 135.0 | 107.3 | 105.6 |

(a) Base of each index: 1989-90 = 100.0

IMPORT PRICE INDEX(a), By Selected ANZSIC Industry of Origin Subdivision

| Period | Agriculture (1) | Oil and gas extraction (12) | Food, beverages and tobacco (21) | Textiles (221-222) | Clothing, footwear and leather (223-226) | Wood and paper products (23) | Printing, publishing and recorded media (241-243) |
|----------------|--------------------|-----------------------------------|--|-----------------------|---|------------------------------------|---|
| 1993-94 | 107.3 | 98.6 | 109.5 | 109.2 | 109.5 | 113.0 | 116.2 |
| 1994-95 | 141.6 | 102.8 | 112.9 | 110.9 | 103.8 | 110.4 | 111.4 |
| 1995-96 | 136.1 | 103.5 | 117.8 | 114.6 | 102.1 | 119.9 | 114.9 |
| 1996 | | | | | | | |
| March | 131.2 | 105.7 | 117.1 | 112.8 | 101.9 | 119.3 | 116.7 |
| April | 129.4 | 108.4 | 115.4 | 111.3 | 100.9 | 117.8 | 113.7 |
| May | 127.4 | 105.7 | 114.4 | 110.0 | 100.1 | 113.0 | 112.8 |
| June | 125.0 | 102.2 | 115.3 | 109.3 | 100.5 | 111.6 | 112.3 |
| July | 124.5 | 105.9 | 115.7 | 109.2 | 100.8 | 108.7 | 114.1 |
| August | 124.9 | 108.5 | 115.9 | 108.4 | 101.4 | 108.2 | 114.7 |
| September | 124.4 | 113.6 | 115.7 | 107.1 | 100.6 | 107.4 | 113.0 |
| October | 122.0 | 120.9 | 115.2 | 106.9 | 100.4 | 106.9 | 113.9 |
| November | 121.6 | 126.0 | 115.5 | 107.8 | 100.1 | 106.8 | 113.7 |
| December | 124.2 | 123.8 | 115.3 | 107.5 | 99.6 | 105.9 | 113.9 |
| 1997 | | | | | | | |
| January | 123.6 | 129.3 | 115.0 | 108.6 | 101.1 | 106.0 | 114.4 |
| February | 130.0 | 130.9 | 114.1 | 109.6 | 101.8 | 107.0 | 115.8 |
| March | 129.8 | 117.0 | 114.6 | 108.2 | 99.2 | 106.0 | 114.2 |
| April | 134.9 | 113.2 | 113.8 | 108.6 | 100.4 | 105.8 | 114.4 |
| May | 134.9 | 108.3 | 115.2 | 108.7 | 101.2 | 105.3 | 114.8 |

(a) Base of each index: 1989-90 = 100.0

IMPORT PRICE INDEX(a), By Selected ANZSIC Industry of Origin Subdivision *continued*

| Period | Petroleum, coal, chemical and associated products (25) | Non-metallic mineral products (26) | Basic metal products (271-273) | Fabricated metal products (274-276) | Transport equipment (281-282) | Other machinery and equipment (283-286) | Other manufacturing (29) |
|----------------|--|---|---|--|-------------------------------------|--|--------------------------------|
| 1993-94 | 104.0 | 117.9 | 101.7 | 123.6 | 136.8 | 111.3 | 114.4 |
| 1994-95 | 104.8 | 116.5 | 100.3 | 117.2 | 137.9 | 107.4 | 111.3 |
| 1995-96 | 109.2 | 117.2 | 106.5 | 117.3 | 136.0 | 102.7 | 111.2 |
| 1996 | | | | | | | |
| March | 108.9 | 116.1 | 106.3 | 117.9 | 133.6 | 100.2 | 110.6 |
| April | 107.7 | 116.0 | 104.1 | 114.7 | 131.1 | 98.3 | 109.5 |
| May | 106.6 | 112.7 | 103.3 | 114.7 | 129.3 | 96.9 | 109.3 |
| June | 105.9 | 113.4 | 102.1 | 114.9 | 128.6 | 96.4 | 109.1 |
| July | 104.9 | 114.1 | 102.0 | 112.5 | 127.8 | 96.4 | 109.7 |
| August | 105.4 | 116.3 | 102.7 | 112.2 | 129.0 | 96.8 | 110.1 |
| September | 104.5 | 116.6 | 102.0 | 110.8 | 128.2 | 95.6 | 109.8 |
| October | 104.6 | 117.0 | 101.6 | 111.8 | 127.5 | 95.3 | 109.3 |
| November | 105.3 | 117.1 | 101.4 | 111.8 | 127.1 | 94.7 | 108.9 |
| December | 104.8 | 116.7 | 101.2 | 111.2 | 126.7 | 93.7 | 108.7 |
| 1997 | | | | | | | |
| January | 106.0 | 117.3 | 99.5 | 113.1 | 127.5 | 94.2 | 110.1 |
| February | 106.1 | 115.5 | 99.8 | 113.7 | 128.3 | 94.4 | 110.4 |
| March | 104.0 | 115.0 | 98.3 | 110.0 | 125.4 | 92.5 | 108.7 |
| April | 103.9 | 114.7 | 97.9 | 111.0 | 125.1 | 92.9 | 109.4 |
| May | 103.3 | 114.2 | 98.3 | 110.1 | 125.5 | 93.3 | 109.9 |

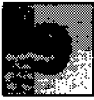
(a) Base of each index: 1989-90 = 100.0



IMPORT PRICE INDEX(a), By BEC Category

| <i>Period</i> | <i>Food and beverages</i> | <i>Industrial supplies n.e.s.</i> | <i>Fuels and lubricants</i> | <i>Capital goods, and parts and accessories thereof</i> | <i>Transport equipment, and parts and accessories thereof</i> | <i>Consumer goods n.e.s.</i> |
|----------------|---------------------------|-----------------------------------|-----------------------------|---|---|------------------------------|
| 1993-94 | 107.8 | 105.0 | 95.4 | 114.0 | 135.9 | 117.7 |
| 1994-95 | 119.5 | 106.6 | 93.0 | 110.0 | 136.8 | 114.0 |
| 1995-96 | 119.8 | 113.4 | 90.7 | 104.0 | 135.1 | 114.1 |
| 1996 | | | | | | |
| March | 116.6 | 112.4 | 94.0 | 101.0 | 132.8 | 113.8 |
| April | 115.8 | 111.2 | 94.6 | 98.9 | 130.4 | 111.9 |
| May | 114.7 | 109.2 | 92.4 | 97.6 | 128.7 | 110.9 |
| June | 114.6 | 108.4 | 90.6 | 97.2 | 128.1 | 110.6 |
| July | 115.0 | 107.6 | 90.1 | 97.1 | 127.3 | 110.9 |
| August | 115.7 | 107.4 | 91.8 | 97.4 | 128.4 | 111.5 |
| September | 115.3 | 106.4 | 95.0 | 96.1 | 127.8 | 110.1 |
| October | 114.1 | 105.6 | 100.4 | 95.8 | 127.1 | 110.1 |
| November | 114.1 | 105.6 | 103.7 | 95.3 | 126.9 | 110.1 |
| December | 114.5 | 105.3 | 102.6 | 94.0 | 126.5 | 109.6 |
| 1997 | | | | | | |
| January | 114.0 | 105.6 | 108.1 | 94.6 | 127.2 | 110.1 |
| February | 115.5 | 105.9 | 109.6 | 94.9 | 127.9 | 110.5 |
| March | 116.2 | 104.7 | 98.4 | 92.7 | 125.3 | 108.7 |
| April | 117.1 | 104.9 | 96.4 | 93.1 | 125.1 | 109.1 |
| May | 118.5 | 104.5 | 94.0 | 93.7 | 125.4 | 109.2 |

(a) Base of each index: 1989-90 = 100.0



IMPORT PRICE INDEX(a), By BEC End Use Class

| <i>Period</i> | <i>Capital goods</i> | <i>Intermediate goods</i> | <i>Consumption goods</i> |
|----------------|----------------------|---------------------------|--------------------------|
| 1993-94 | 122.8 | 106.6 | 121.1 |
| 1994-95 | 119.8 | 107.6 | 119.2 |
| 1995-96 | 116.0 | 109.2 | 119.6 |
| 1996 | | | |
| March | 113.5 | 107.7 | 119.0 |
| April | 111.3 | 106.4 | 116.9 |
| May | 109.7 | 104.6 | 116.1 |
| June | 109.2 | 103.8 | 115.8 |
| July | 109.2 | 103.0 | 115.9 |
| August | 109.8 | 103.3 | 116.5 |
| September | 108.7 | 102.7 | 115.6 |
| October | 108.4 | 102.4 | 115.3 |
| November | 108.0 | 102.6 | 115.2 |
| December | 106.9 | 102.2 | 114.8 |
| 1997 | | | |
| January | 107.5 | 103.1 | 115.2 |
| February | 107.9 | 103.7 | 115.5 |
| March | 105.7 | 101.1 | 114.0 |
| April | 105.9 | 101.2 | 114.1 |
| May | 106.3 | 101.1 | 114.3 |

(a) Base of each index: 1989-90 = 100.0

EXPLANATORY NOTES

INTRODUCTION

1 This publication presents index numbers measuring changes in the prices of imports of merchandise landed in Australia — the *Import Price Index*. It is calculated on a reference base of 1989–90 = 100.0.

2 Index numbers for the current month and the previous month are preliminary and subject to revision.

SCOPE

3 The Import Price Index, either directly or indirectly, covers about 95% of merchandise imported during 1988–89 and 1989–90.

4 The remaining imports are not represented because of the inherent difficulties in pricing the items to a constant quality. These unrepresented items include:

- live animals (not for food)
- jewellery and other articles of precious metal n.e.s.
- military equipment
- special transactions
- commodities not classified according to kind
- works of art, collectors' pieces, antiques
- ships of various types.

5 The index numbers for each month relate to prices of those imports of merchandise that are physically landed in Australia during that month.

CLASSIFICATION

6 Index numbers for sections and selected divisions of the Standard International Trade Classification (SITC), Revision 3 are provided in tables 3 and 4, while index numbers for selected sections of the Combined Australian Customs Tariff and Statistical Nomenclature (ATSN) are provided in table 5.

7 Tables 6 and 7 contain index numbers for selected Divisions and Subdivisions, on an 'industry of origin' basis, of the Australian and New Zealand Standard Industrial Classification (ANZSIC). The 'industry of origin' is the industry in which the imported commodity would be classified as primarily produced had it been produced in Australia, determined in accordance with the classification rules of the ANZSIC.

8 Table 8 contains index numbers for categories of the United Nations' Classification by Broad Economic Categories (BEC). Table 9 contains index numbers for these categories rearranged to form the broader end use classes: Capital goods, Intermediate goods and Consumption goods. Each category has been allocated wholly to one of these classes except for:

- category 321, Motor spirit (which has been allocated in part to Intermediate goods and in part to Consumption goods)
- category 51, Passenger motor cars (which has been allocated in part to Capital goods and in part to Consumption goods).

ITEMS AND WEIGHTS

9 The index is a fixed weights index. The commodities directly represented in the index (the index items), were selected on the basis of their import values during 1988–89 and 1989–90. They constituted approximately 95% of the total value of imports of merchandise to Australia during these years. The selected items were allocated weights in accordance with the average value of imports for each item during 1988–89 and 1989–90. These weights were then revalued to reflect 1989–90 price levels. Many of the items carry not only their own weight but also the weight of unpriced commodities whose prices are considered to move in a similar manner. The weighting pattern of the Import Price Index, i.e. the percentage contributions for index items and groups, was shown in the September 1991 issue of this publication.

EXPLANATORY NOTES

PRICE MEASUREMENT

10 Prices of individual shipments are obtained from importers of the selected items and relate to the month in which the goods arrive in Australia. Imports are priced on a 'free on board' (f.o.b.), country of origin basis. Freight and insurance charges involved in shipping goods from foreign to Australian ports are therefore excluded from the prices used in the index, as are Australian import duties.

11 As the prices used in the index are expressed in Australian currency, changes in the relative value of the Australian dollar and overseas currencies can have a direct impact on price movements for the many commodities that are bought in currencies other than Australian dollars. Prices reported in a foreign currency are converted to Australian dollars using the exchange rate prevailing at the time of departure from the foreign port. Where imports are purchased at prices expressed in terms of a foreign currency and forward exchange cover is used, the prices in the index *exclude* the forward exchange cover.

12 The price series used relate to specified standards, grades, types, etc. of each commodity. The aim is to incorporate in the index price changes for imports of representative goods of constant quality. Wherever possible, prices from predominant countries of origin are used for each of the specified goods priced in order to lessen the impact of price variations attributable solely to changes, over time, in the mix of countries of origin. In most cases prices are combined using fixed weights between markets. Weights between countries are reviewed from time to time and revised where necessary.

INDEX NUMBERS

13 Index numbers for financial years are simple averages of monthly index numbers.

REVISIONS

14 Index numbers for the current month and the previous month are preliminary and subject to revision. From time to time index numbers for earlier months may also be revised. This will occur whenever the ABS obtains more complete information or discovers that incorrect prices have been used.

ANALYSIS OF INDEX CHANGES

15 Care should be exercised when interpreting month-to-month movements in the indexes as short-term movements do not necessarily indicate changes in trend.

16 Movements in indexes from one period to another can be expressed either as changes in 'index points' or as percentage changes. The following example illustrates the method of calculating index points changes and percentage changes between any two periods:

All groups index numbers —

| | | |
|----------|-------|---------------|
| May 1997 | 107.3 | (see Table 1) |
|----------|-------|---------------|

| | | |
|---------------|-------|---------------|
| less May 1996 | 110.2 | (see Table 1) |
|---------------|-------|---------------|

| | | |
|------------------------|------|--|
| Change in index points | -2.9 | |
|------------------------|------|--|

| | | | | | |
|---------------------|------|---|-------|---------|------|
| Percentage change = | -2.9 | ÷ | 110.2 | x 100 = | -2.6 |
|---------------------|------|---|-------|---------|------|

ANALYSIS OF INDEX CHANGES

CONTINUED

17 Table 2 provides an analysis of the contribution which selected categories of imports make to the All groups index. For example, Road vehicles contributed 14.15 index points to the All groups index number of 107.3 for May 1997 and 0.02 index points to the net change of 0.1 index points.

EXPLANATORY NOTES

FURTHER INFORMATION

18 The September 1991 issue of this publication contains a more detailed description of the index. A detailed description of the previous Import Price Index is contained in the December Quarter 1982 issue of this publication.

19 Further information on the index is presented in the publication *Producer and Foreign Trade Price Indexes: Concepts, Sources and Methods* (6419.0).

RELATED PUBLICATIONS

20 Users may also wish to refer to the following publications which are available from ABS Bookshops:

- *Export Price Index, Australia* (6405.0)
- *Price Indexes of Articles Produced by Manufacturing Industry, Australia* (6412.0)
- *Price Indexes of Materials Used in Manufacturing Industries, Australia* (6411.0).

21 Other ABS publications that may be of interest include *Balance of Payments, Australia* (5302.0).

22 Current publications produced by the ABS are listed in the *Catalogue of Publications and Products, Australia* (1101.0). The ABS also issues, on Tuesdays and Fridays, a *Release Advice* (1105.0) which lists publications to be released in the next few days. The Catalogue and Release Advice are available from any ABS office.

UNPUBLISHED STATISTICS

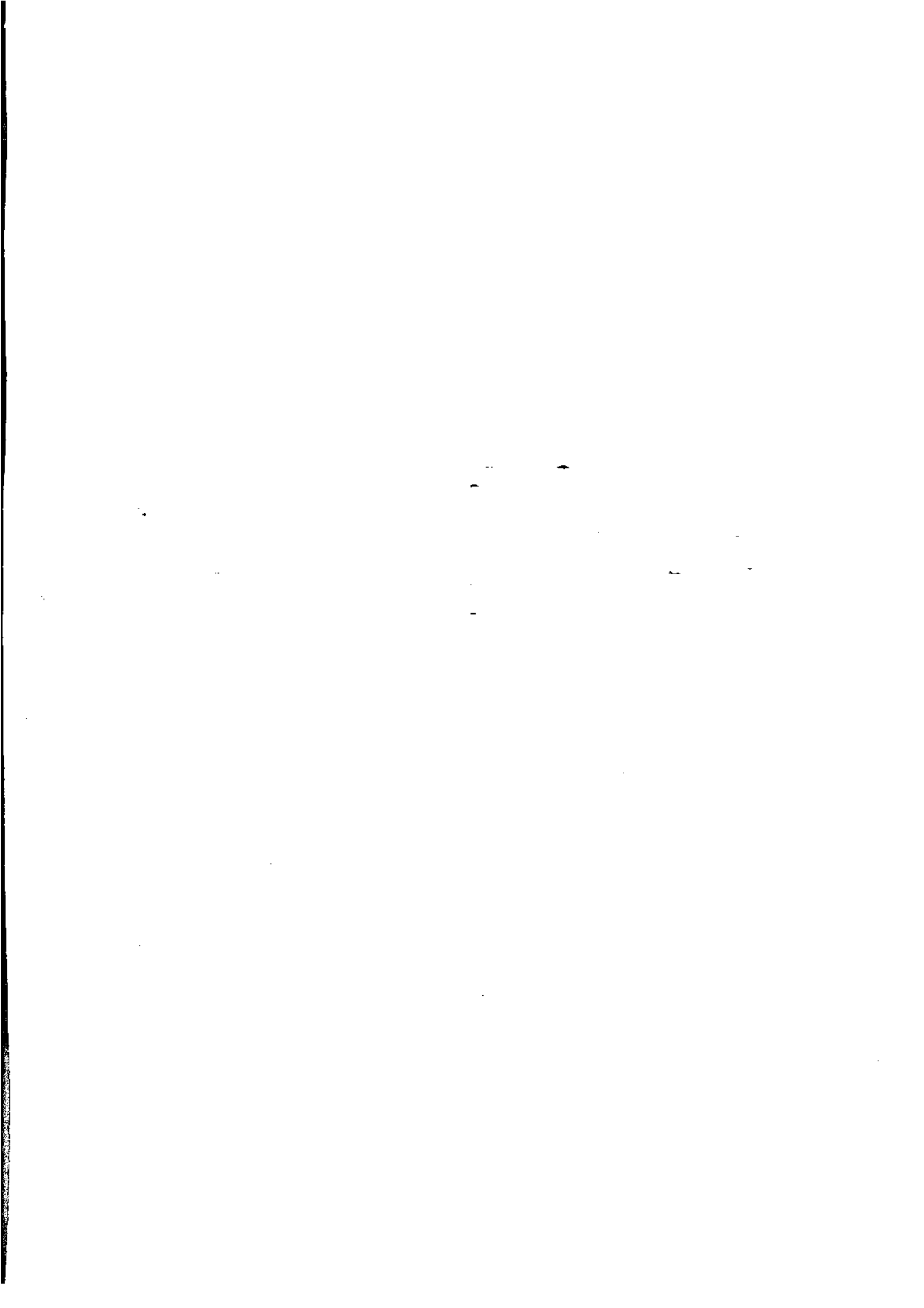
23 As well as the statistics included in this and related publications, the ABS may have other relevant unpublished data available. Inquiries should be made to Peter Sturgeon on 06 252 5348 or to any ABS office.

SYMBOLS AND OTHER USAGES

| | |
|--------|---|
| ANZSIC | Australian and New Zealand Standard Industrial Classification |
| ATSN | Combined Australian Tariff and Statistical Nomenclature |
| BEC | Classification by Broad Economic Categories |
| f.o.b. | free on board |
| n.e.s. | not elsewhere specified or included |
| r | figures or series revised since previous issue |
| SITC | Standard International Trade Classification |







FOR MORE INFORMATION...

The ABS publishes a wide range of information on Australia's economic and social conditions. A catalogue of publications and products is available from any of our offices (see below).

INFORMATION CONSULTANCY SERVICES

Information tailored to special needs of clients can be obtained from the Information Consultancy Service available at ABS Offices (see below).

ABS PRODUCTS

A large number of ABS products is available from the ABS Bookshops (see below). The ABS also provides a subscription service – you can telephone the ABS Subscription Service Australia wide toll free on 1800 0206 08.

ELECTRONIC SERVICES

A large range of data is available via on-line services, diskette, magnetic tape, tape cartridge and CD ROM. For more details about our electronic data services, contact any ABS office (see below) or e-mail us at:

- client.services@abs.gov.au

GENERAL SALES AND INQUIRIES

- Sydney 02 9268 4611
- Melbourne 03 9615 7755
- Brisbane 07 3222 6351
- Perth 08 9360 5140
- Adelaide 08 8237 7100
- Hobart 03 6222 5800
- Darwin 08 8943 2111
- Canberra 06 252 6627
- Information Services, ABS
PO Box 10, Belconnen ACT 2616



2641400005974

ISSN 0812 7247

RRP \$16.00